

MONTHLY MEMBERSHIP PROGRESS REPORT

District 27 C1

Results as of: 6/30/2024

GMT:

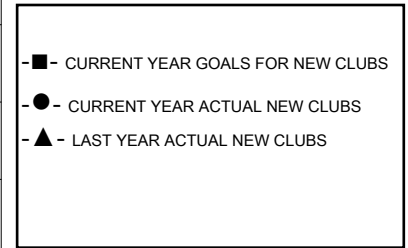
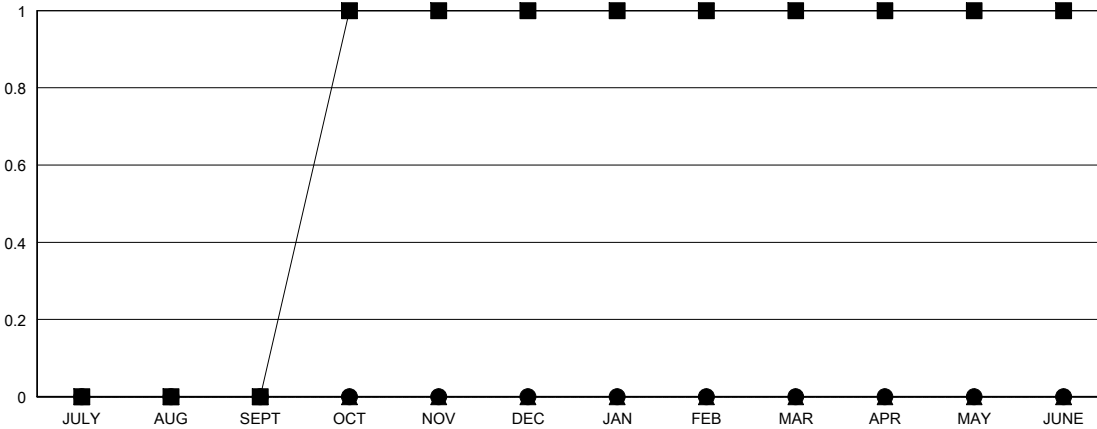
LOCATION WISCONSIN

GMT CA

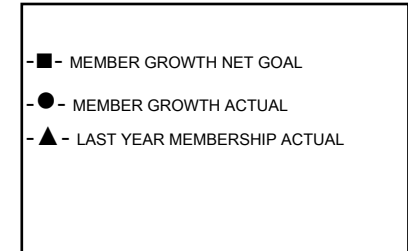
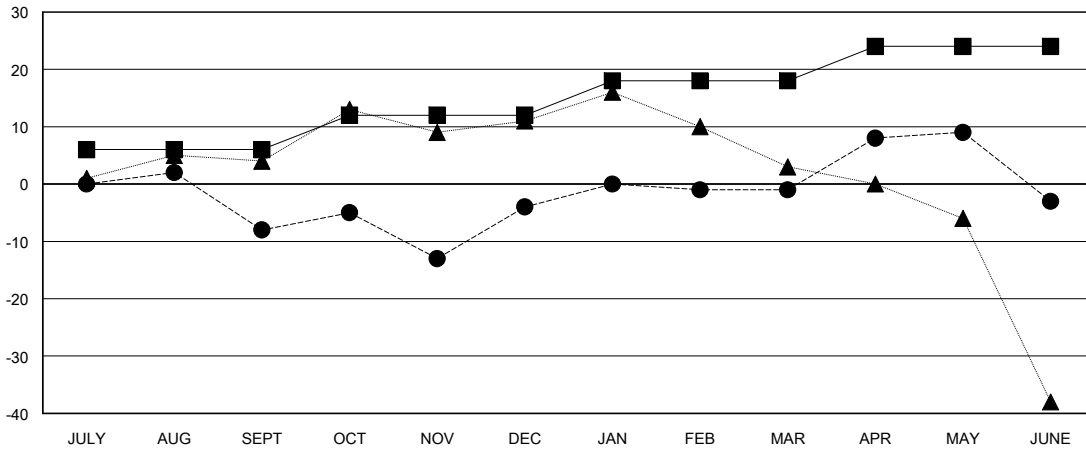
Clubs			
RESULTS FOR 2023-2024			
QUARTER	NEW CLUB GOAL	NEW CLUBS	DROPPED CLUBS
JULY/AUG/SEPT	0	0	0
OCT/NOV/DEC	1	0	0
JAN/FEB/MAR	0	0	0
APR/MAY/JUNE	0	0	0

Members			
RESULTS FOR 2023-2024			
QUARTER	MEMBER GROWTH NET GOAL	MEMBER GROWTH ACTUAL	DROPPED MEMBERS ACTUAL (including transfers)
JULY/AUG/SEPT	6	28	34
OCT/NOV/DEC	6	38	34
JAN/FEB/MAR	6	16	12
APR/MAY/JUNE	6	27	28

GOALS AND ACTUAL NEW CLUBS CUMULATIVE



GOALS AND ACTUAL MEMBERS CUMULATIVE



DROPPED CLUBS: 0	
DROPPED MEMBERS	
DECEASED	22
CLUB CANCELLED	0
OTHER	86
TOTAL	108

29 CLUBS OF 51 ADDED 1 OR MORE NEW MEMBERS

[CLICK HERE FOR CUMULATIVE MEMBERSHIP DATA](#)

GENDER DISTRIBUTION	
MALE	957 (69.91%)
FEMALE	412 (30.09%)

TOTAL FAMILY UNIT MEMBERS	386
FAMILY MEMBERS PAYING HALF DUES	198